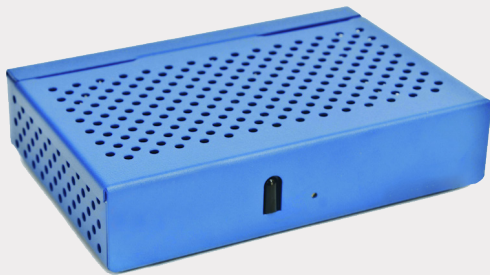


# r9300 Media Player

Single HD AV (HDMI) out End-Point



IPTV set-top box which delivers advanced network video decoding capabilities across a wide range of resolutions up to 1080p60 for superb image quality. Its low power consumption makes it an economical choice for enterprise video display.

## Video Output

- HDMI v1.4b (with HDCP):
  - 1080p, 1080i, 720p (50Hz/59.94Hz/60Hz)
  - 576p, 576i (50Hz)
  - 480p, 480i (59.94Hz/60Hz)

## Audio Output

- HDMI: 2 or 6 Channel PCM or Bitstream
- TOS: 2 Channel PCM or Bitstream

## Video Decoding

- MPEG-4 part 10 H.264 (ISO/IEC 14496/10)
- MPEG-2 (ISO/IEC 13818-2)
- Resolutions:
  - 1080i, 1080p @ 50Hz, 59.94Hz or 60Hz
  - 576i, 576p, 720p
  - 480i, 480p
  - 240p, 360p

## Audio Decoding

- MPEG-1 Layer II (ISO/IEC 11172-3)
- AC3/EAC3
- AAC/HE-AAC
- Downmixes multi-channel audio to stereo
- Dolby Digital and Dolby Digital Plus pass through

## Streaming

- MPEG 2 Transport Stream (ISO/IEC 13818-1)
- UDP, RTP
- HLS (6Mbps limit for HLS)
- IP multicast, IP unicast
- IGMPv2/v3
- Video On-Demand: HLS, RTSP, HTTP

## USB 2.0 Port

- Can be used for external storage and Human Interface Devices
- USB hot plug enables auto-mounting of USB devices

## Features & Benefits

- Support IPTV streams up to 1080p60 for excellent image quality
- Advanced network HD video decoding
- Quiet, fanless design
- Low power consumption
- Plug-and-play connectivity with Power over Ethernet (PoE)
- Built-in user interface for easy administration
- HTTPS and IEEE 802.1x support for sensitive network environments

## Content Protection

- Decryption of HDCPv2.2 protected content

## Channel Management

- Using the Avedia Server Smart Control application
  - Set channel
  - Set volume/mute
- On-device channel management
- SAP/SDP announcements
- Channel access control
- XML channel lists, static & hidden channels
- Channel redundancy & failover to channel or web

## Infra-red/Control Options

- Built-in IR receiver
- 3.5mm jack for IR extender or tethered remote control
- Third-party IR & USB remote controls supported
- TV control via Serial RS232 or HDMI CEC
- HDMI CEC Remote Control Passthrough

## System

- CPU: ST40-300 650MHz
- RAM: 512MB
- Flash: 256MB (for firmware and configuration)
- OS: STLinux 2.4

## Built-in User Interface

- Channel selection menu
- Volume control
- Audio Language control
- DVB Subtitles (ETSI EN 300 743)
- Closed captions (CEA-608 captions embedded in CEA-708 data)
- Teletext subtitles (ETSI EN 300 706)

## Integrated Web Browser

- Ekioh TV Browser for integration with third-party middleware
- HTML 5
- CSS 3 & DOM 3
- Image formats: PNG, JPEG

## Management

- Fully integrated with the following management tools:
  - Admin level management using Avedia Server Director and Site Manager
  - Day-to-day management using Avedia Server Smart Control
- HTTP/HTTPS device web interface; Chrome® recommended
- Simple Certificate Enrollment Protocol (SCEP) for HTTPS
- SNMP
- UPnP device discovery
- RESTful API
- Console access via SSH and Serial RS232 Admin Port
- Terminal Control Interface (TCI) for control system integration
- Event logging via Syslog (local and remote)
- Firmware upgrade via TFTP
- Configuration backup/restore via TFTP
- Secure Mode option to lock down media player access

## Network

- Linux dual IPv4/IPv6 stack
- DHCP/DHCPv6 or Static IP addressing
- IEEE 802.3u 10/100Mbps MDIX Ethernet
- IEEE 802.3af POE PD
- IEEE 802.1X network authentication
- Simple Certificate Enrollment Protocol (SCEP) for 802.1X

## Additional Features

- Accelerated channel change mode (sub 500ms (transcoder required))
- Video wall capability
- Unit-to-unit sync capability
- Low end-to-end latency (sub 400ms end-to-end latency (specific settings required. Contact VITEC Support for more information))

## Options

- TV and under-desk mounting brackets
- IR and wired remote controls and extenders
- Power supplies for non-POE environments

## Protocols

IP (RFC791), UDP (RFC768), TCP (RFC793), ARP (RFC826), DNS (RFC1035), DHCP (RFC2131), ICMP (RFC0792), IGMP v3 (RFC 3376), TFTP (RFC1350), HTTP (RFC2616), Syslog (RFC3164), NTP (RFC1305), SAP (RFC2974), SDP (RFC4566), RTP (RFC3550), RTSP (RFC2362), SNMPv1/v2c (RFC1157/RFC1901), HLS, HTTPS (RFC2818), 802.1X (RFC3580), SSDP, IPv6 (RFC 8200), DHCPv6 (RFC 8415), SLAAC (RFC 4862), MLD (v2) (RFC 3810), NDP (RFC 4861)

## Environment

- Operating temperature: 0 ...+40°C / +32 ... +122°F
- Storage temperature: -20 ...+70°C / -4 ... +158°F
- Operating Relative Humidity: 5 – 95% (non-condensing)

## Regulatory

- CE:
  - IEC 62368-1: 2014
  - EN 62368-1:2014+A11:2017
  - EN55032:2012 + corrigenda Aug 2012 & Dec 2012
  - EN55024:2010 + A1:2015
  - EN 61000-3-3:2013
- UL/CSA:
  - UL62368-1:2014
  - CSA C22.2 No. 62368-1, Rev. December 01, 2014
- FCC:
  - 47CFR:2011 Part 15, Sub Part B
  - ANSI C63-4:2014
- ACMA:
  - AS/NZS 62368.1:2018
  - AS/NZS CISPR 32:2013

## Dimensions

- 35mm (H) x 140mm (L) x 95mm (D)

## Weight

- 0.4kg

## Power

- DC Jack (24V): 5W typical, 8W maximum
- POE IEEE 802.3af PD (48V): 5W typical, 8W maximum

## MTBF

- Calculated to MIL-HDBK-217F, notice 2: 126295 hours (14.4 years)

## In the Box

- r9300 Media Player with HD AV output, PoE (802.3af); includes ArtioView client licence
- Product Safety Brochure (hard copy)

## Ordering Information (P/N)

- 18332 (avply-r9300) - r9300 media player - single HD AV (HDMI) out