

# ArtioSign

Digital Signage + IPTV in One



ArtioSign enables the creation, management and display of digital signage as part of a VITEC IP video system. ArtioSign provides a simple drag-and-drop interface for creating digital signage content, while Smart Control and Schedules are used to manage the content displayed.

## ArtioSign

Create uniquely branded, full HD digital signage layouts with drag-and-drop simplicity. Choose from the following on-screen elements to build digital signage layouts:

### Video

- IP video streams (up to and including 4K)
- Local content stored on media player (supported video format: Transport Stream (.m2t, .ts). MP4 (.mp4), Matroska (.mkv), AVI (.avi) and Windows Media Video (.wmv) formats are transcoded to TS format on upload)
- Add lists of videos/channels for selection by remote control
- Add multiple videos to create a video playlist
- Choose to play live video full screen or in a dedicated pane
- Add up to two video elements in a layout

### Image

- JPEG, PNG, Static GIF
- Multiple image carousel with configurable duration
- Add a range of transitions to an image carousel

### Text (Static, multi-line, scrolling)

- Upload custom fonts to use with text elements
- Set text scroll to left or right

### RSS feeds (Scrolling)

- Upload custom fonts to use with RSS
- Set feed scroll to left or right

### PDF import

- Import single or multi-page documents
- Delete or re-arrange pages

### PowerPoint™ import

- Import single or multi-slide presentations
- Delete or re-arrange slides

## Features & Benefits

- Create engaging, dynamic signage with an intuitive drag-and-drop interface
- Update signage screens instantly and with ease using your remote control
- Schedule targeted content to be displayed at different times of the day
- Create sequences of actions that can be carried out frequently as workflows (power on, set volume/channel, publish signage playlists)
- Display meeting room location and availability information
- Display eye-catching advertisements, discounts and opportunities
- Make useful information easily accessible by integrating flight information, bus timetable, weather updates and news

## Point of Sale

- Integrates with Oracle Symphony Point of Sale systems to display dynamic menu items
- Requires PoS licence (06052)

## Browser

- Display simple HTML pages and integrate third-party data

## Date/Time

- Multiple day/month/year formats available
- HH/MM, HH/MM/SS, 12/24hr time formats
- Display the time in various different time zones

## Meeting Room

- Compatible with Microsoft Exchange 2016, Office 365, Amadeus Delphi hospitality system and Hyatt Envision
- Standard Meeting Room element displays now-and-next information at room entrance
- Licensable Meeting Room Summary element (06032) displays multiple meetings per room, with support for wayfinding

## Weather

- Up to five day forecast
- Display weather in multiple locations
- Celsius/Fahrenheit maximum/minimum temperature display
- Select from multiple languages for displayed text

## Templates

- 8 landscape and 8 portrait templates

## Create playlists

- Display multiple layouts in a loop with configurable durations
- Configure layouts to display on certain days, dates and times

## Configurable permissions

- Allow users or profiles to edit only certain playlists
- Allow users or profiles to edit only certain elements within certain playlists

## Moment of Exclusivity

- Enables instant, time-limited changes to signage content to notify viewers of important events. Requires MoE licence (06031)

## Smart Control

Publish playlists and signage schedules to ArtioSign Display-enabled devices using the simple Smart Control drag-and-drop interface. Choose to display devices as tiles or as points on a floor plan or map.

## Control Groups

- Organise devices into control groups for simple publishing to multiple devices
- Drag and drop devices to create/organise control groups
- Unlimited number of control groups
- Unlimited number of devices in a control group

## Access

- Access Smart Control from a PC, or from an Apple or Android tablet to manage digital signage on the move

## Configurable permissions

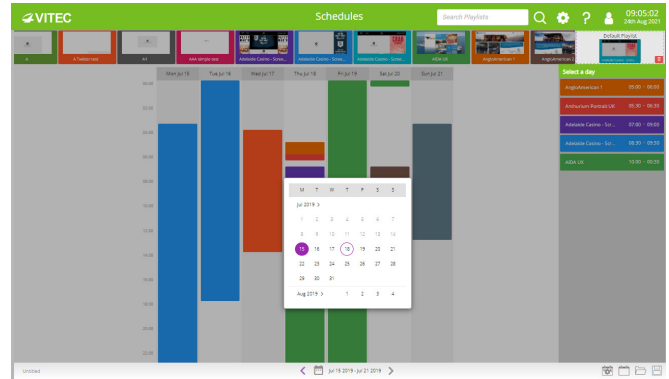
- Allow users or profiles to publish only certain control groups/devices, or to only view certain channels
- Allow users or profiles to publish only certain playlists/signage schedules

## Schedules

Schedule when specific content should be displayed, and when signage displays should be powered off and on.

## Schedule Creation

- Create signage schedules to schedule content to be displayed up to a year in advance
- Schedule content with 1 minute granularity
- Agenda view aids short adjacent playlist timing
- Specify default playlist for when no other content is scheduled
- Configurable publish time
- Easily search for playlists or signage schedules



## Configurable permissions

- Allow users or profiles to edit only certain signage schedules

## ArtioSign Approvals

Create an Approver user profile to ensure consistency and accuracy of signage screens. When approvals functionality is enabled, playlists and schedules must first be approved before they can be published.

## Licensing

Feature	Required
ArtioSign Display	Licence activation requires the MAC address of the Avedia Server (requires Media Player version 6.2.3+)
High Availability	06048 licence
Point of Sale	06052 licence
Meeting Room Summary	06032 licence
Moment of Exclusivity	06031 licence

Purchased licence options require the Avedia Server m8115 or m8365 software module

## ArtioSign Display

Display digital signage content on VITEC Media Players and compatible System-on-Chip displays.

- VITEC 93-, 94- and 95-series Media Players
  - Simple floating licence mechanism (18318) enables VITEC Media Players to become digital signage end-points
  - Support for HDCPv2.2, Samsung LYNK<sup>®</sup> DRM (SSSP6, 93-series Media Players)
  - Low power consumption makes VITEC Media Players an economic choice for digital signage playback
- System-on-Chip Signage Displays
  - Licence (06049) enables Samsung (SSSP6/SSSP7/10), LG (WebOS 4.1) and Philips signage displays to become digital signage end-points
  - Touch functionality available on Samsung SSSP6 QB13R-T, SSSP10 QM43R-T & Philips 10BDL4551T

## VITEC Design Service

- Customised ArtioSign signage and design templates can be provided for your organisation

## Ordering Information (P/N)

- 18347 Avedia Server m8105 Software Licence
- 18348 Avedia Server m8115 Software Licence
- 18349 Avedia Server m8365 Software Licence
- 18318 ArtioSign - Floating Media Player Licence
- 06031 ArtioSign software licence - Moment of Exclusivity
- 06032 ArtioSign software licence - Meeting room summary element
- 06048 Avedia App option - High Availability
- 06049 ArtioSign Software licence - floating LFD/SSSP client
- 06052 ArtioSign software licence - Point of Sale element