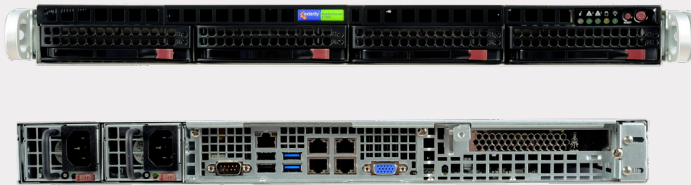


# AvediaServer®

AvediaServer c1565 | avsrv-c1565



The c1565 provides an enterprise class hardware platform for AvediaServer installations. With up to 24 TB of RAID 10 disk storage, dual redundant power supplies and four 1Gb ports in a compact 1U rack mountable chassis, the c1565 can deliver IPTV system control and client features in the most demanding of networks

## Interfaces

- Four 802.3 100/1000 Ethernet (RJ-45) sockets plus IPMI
- Serial, VGA, 4 x USB

## Storage

- 4 SATA hot swap disk bays
- Hardware based RAID controller

Disk Option	SD Video (hours)	HD Video (hours)
4TB (RAID10)	1300	400
8TB (RAID10)	2600	800
16TB (RAID10)	5200	1600
24TB (RAID10)	7800	2400

## Physical Format

- Compact 1U rack-mounted standard 19" chassis
- Chassis dimensions: W: 437mm x D: 540mm x H: 43mm
- Weight: 18kg (fully loaded)

## Environment

- Operating Temperature Range: 10° to 35°C (50° to 95°F)
- Non-operating Temperature Range: -40° to 70°C (-40° to 158°F)
- Operating Humidity Range: 8% to 90%
- Non-operating Humidity Range: 5% to 95%

## Power

- Type: 400W dual redundant auto-switching
- AC Input: 100–240V, 60–50Hz, 6-3A
- Power consumption: Typical 100W, Max 150W

## Regulatory

- CE: IEC 62368-1: 2014
  - EN 62368-1:2014+A11:2017
  - EN55032:2012 + corrigenda Aug 2012 & Dec 2012
  - EN55024:2010 + A1:2015
  - EN 61000-3-2:2014
  - EN 61000-3-3:2013
- UL/CSA: UL62368-1:2014
  - CSA C22.2 No. 62368-1, Rev. February 17, 2012
- FCC: 47CFR:2011 Part 15, Sub Part B
  - ANSI C63-4:2014
- ACMA: AS/NZS 62368.1:2018

## Power Cords

- avsrv-c1565-Xtb-au = Australia and New Zealand
- avsrv-c1565-Xtb-uk = UK
- avsrv-c1565-Xtb-eu = Europe
- avsrv-c1565-Xtb-sa = South Africa
- avsrv-c1565-Xtb-us = North America

## In the Box

- Box 1:
  - AvediaServer c1565 Hardware Platform
  - Rack mounting rail brackets
  - 2 power cords
  - Product Safety Brochure (hard copy)
  - Disk Installation Instruction Guide
- Box 2:
  - 4 hard disks, pre-mounted in hot-swap caddies

Chassis and Software Module Compatibility

	Core Software Modules					Bandwidth Options							Hard Disk RAID Options						
	m8105	m8115	m7205	m7305	m8365	110 Mbps	220 Mbps	550 Mbps	1000 Mbps	2000 Mbps	3000 Mbps	6000 Mbps	RAID 10						
						4TB	8TB	16TB	24TB	32TB	48TB								
c1520	✓	✓	✓	✓	✓	✓	✓												
c1565	✓	✓	✓	✓	✓	✓	✓	✓	✓	✓			✓	✓	✓	✓			
c1585	✓	✓	✓	✓	✓	✓	✓	✓	✓	✓	✓	✓		✓	✓			✓	✓
v1600	✓	✓	✓	✓	✓	✓	✓	✓	✓	✓	✓	✓							