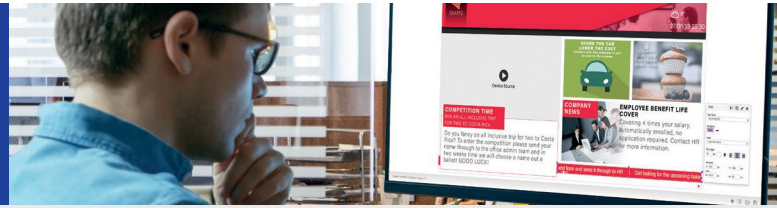


ArtioSign

Datasheet | avsrv-m7xxx, avsrv-m8xxx, artio-flo, artio-ldf



ArtioSign enables the creation, management and display of digital signage as part of a VITEC IP video system. **ArtioSign** provides a simple drag-and-drop interface for creating digital signage content, while **Smart Control** and **Schedules** are used to manage the content displayed.

ArtioSign

Create uniquely branded, full HD digital signage layouts with drag-and-drop simplicity. Choose from the following on-screen elements to build digital signage layouts

Video

- IP video streams (up to and including 4K)
- Local content stored on media player (supported video format: Transport Stream (.m2t, .ts). MP4 (.mp4), Matroska (.mkv), AVI (.avi) and Windows Media Video (.wmv) formats are transcoded to TS format on upload
- Add lists of videos or channels for selection by remote control
- Add multiple videos to create a video playlist
- Choose to play live video full screen or in dedicated pane
- Add up to two video elements in a layout

Image

- JPEG, PNG, Static GIF
- Multiple image carousel with configurable duration
- Add a range of transitions to an image carousel

Text (Static, multi-line, scrolling)

- Upload custom fonts to use with text elements
- Text scroll can be set to left or right

RSS feeds (Scrolling)

- Upload custom fonts to use with RSS
- Feed scroll can be set to left or right

Data Feeds

- Use data feeds to update ArtioSign tables
- Host files locally or on SharePoint/OneDrive
- XML, JSON, CSV and XLSX files supported

PDF import

- Import single or multi-page documents
- Delete or re-arrange pages

PowerPoint™ import

- Import single or multi-slide presentations
- Delete or re-arrange slides

Point of Sale

- Integrates with Oracle Symphony Point of Sale systems to display dynamic menu items
- artio-lic-pos licence required

Browser

- Display simple HTML pages and integrate third-party data

Date/Time

- DD/MM/YY, MM/DD/YY, DD/MM/YYYY, MM/DD/YYYY formats
- HH/MM, HH/MM/SS, 12/24hr time formats
- Display the time in various different timezones

London Transport

- Shows the status of London Underground, Overground, TfL Rail, DLR and Tram services
- artio-lic-ldn licence required

Meeting Room

- Compatible with:
 - Amadeus Delphi hospitality system
 - Microsoft Exchange 2016
 - Hyatt Envision
 - Office 365
- Standard Meeting Room element displays now-and-next information at venue entrance
- Licensable Meeting Room Summary element (artio-lic-msum) displays multiple meetings per room, with support for way-finding

Weather

- Up to five day forecast
- Display weather in multiple locations
- Celsius/Fahrenheit maximum/minimum temperature display
- Multiple language selection for displayed text

Templates

- 24 landscape and portrait templates

Twitter

- Display Tweets from a single Twitter profile
- Retain and display up to 30 Tweets in a carousel with configurable display duration

Create playlists

- Multiple layouts displayed in a loop with configurable durations
- Configure layouts to display on certain days, dates and times

Configurable permissions

- Limit users or profiles to editing only certain playlists
- Limit users or profiles to editing only certain elements within certain playlists

Moment of Exclusivity

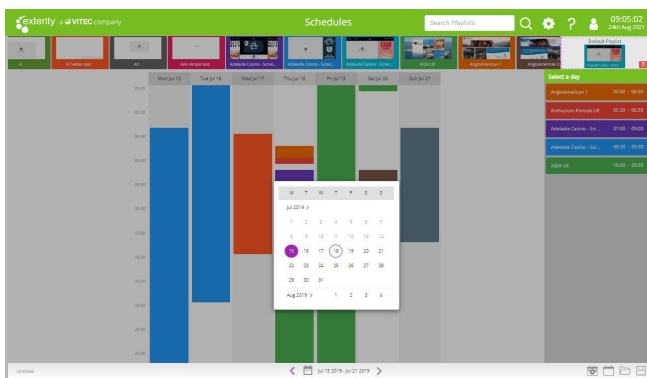
- Design Moment of Exclusivity signage for your venue

Schedules

Schedule when specific content should be displayed, and when signage displays should be powered off and on.

Campaign Creation

- Create campaigns to schedule content to be displayed up to a year in advance
- Schedule content with 1 minute granularity
- Agenda view aids short adjacent playlist timing
- Specify default playlist for when no other content is scheduled
- Configurable publish time
- Easily search for playlists or campaigns



Configurable permissions

- Limit users or profiles to editing only certain campaigns

Smart Control

Publish playlists and campaigns to ArtioSign Display-enabled devices using the simple Smart Control drag-and-drop interface.

Control Groups

- Organise devices into control groups for simple publishing to multiple devices
- Drag and drop devices to create/organise control groups
- Unlimited number of control groups
- Unlimited number of devices in a control group

Access

- Access Smart Control from a PC, or from an Apple or Android tablet to manage digital signage on the move

Configurable permissions

- Limit users or profiles to publishing to certain control groups/ devices, or to viewing certain channels
- Limit users or profiles to publishing only certain playlists/ campaigns

ArtioSign Approvals

Create an Approver user profile to ensure consistency and accuracy of signage screens. When approvals functionality is enabled, playlists and schedules must first be approved before they can be published.

Licensing

Feature	Required
ArtioSign Display	Licence activation requires the MAC address of the AvediaServer (requires Media Player version 6.2.3+)
London Transport	MAC address of the AvediaServer
High Availability	avsrv-1009 licence
Point of Sale	artio-lic-pos licence
Meeting Room Summary	artio-lic-msum licence

- Purchased licence options require the AvediaServer m8115, m7205, m7305 or m8365 software module

ArtioSign Display

Displays digital signage content on VITEC Media Players and Samsung and LG LFDs.

- VITEC 93-, 94- and 96-series Media Players
 - Simple floating licence mechanism (artio-flo) enables VITEC Media Players to become digital signage end-points
 - Support for HDCPv2.2, Samsung LYNK[®] DRM (SSSP6, 93-series media players) and ARRIS SECUREMEDIA[®] content-protected (encrypted) streams
 - Low power consumption makes VITEC Media Players an economic choice for digital signage playback
- Large Format Signage Displays
 - artio-lfd licences enable Samsung LFD (SSSP6), LG LFD (WebOS 4.0) and Philips LFDs to become digital signage endpoints
 - Touch functionality available on SSSP6 QB13R-T

VITEC Design Service

- Customised design service available for the creation of digital signage
- We can provide a set of customised ArtioSign design templates for your organisation