

Video Wall Controllers

Powerful, High-Performance
Digital Video Wall Controllers



Powerful, professional-grade video wall controllers enabling the display of IPTV streams and stunning digital signage on configurable video walls



Springfield		
51	52-A	53
0754	0810	0710
0805	0910	0810
0813	1010	0910
0822	1120	1020
0925	1220	1120
1020	1345	1245
1120	1450	1310
1220	1530	1420

Designed to integrate multiple types of video and data sources to create engaging video walls, VITEC Video Wall Controllers are robust, flexible units used in various different environments, such as sports stadia, control rooms, defense installations, and more.

VITEC's range of video wall controllers features compact standalone units, and modular, configurable frames with input and output options for any video wall requirement. VITEC video wall controllers feature hardware-based video rendering to ensure smooth, synchronized, reliable playback of IPTV and digital signage in stunning video wall configurations.

Easy to set up and manage using intuitive software, VITEC video wall controllers enable the creation of eye-catching content walls comprised of up to 24 displays, ensuring that whatever your requirements, our range of video wall controllers has you covered.

Fx4 Series

Compact standalone controllers
for small-scale video walls



Small, but mighty

The Fx4 series offers flexible and compact single-input video wall controllers, giving users the freedom to create and deploy video wall signage projects when paired with a VITEC end-point. The Fx4 series offers options with various input and output options, ensuring that whatever displays you have, the Fx4 series has the perfect solution.



The FX4 series hardware enables images to be cropped, scaled, rotated and frame-rate converted, allowing for non-rectangular screen arrangements, mixed monitor orientation and gives users the freedom to create stunning multi-monitor digital signage projects.

Easily set up and configured using VITEC's intuitive Wall Designer software, Fx4 series video wall controllers are the ideal solution for single input, multi-output video walls.

VSN Series

A powerful and scalable
video wall solution



Supporting projects with video wall requirements of any scale, VSN Video Wall Controllers are designed for use in a variety of environments ranging from stadiums and venues, to control rooms and defense installations.

The VSN series provides solutions for discrete and demanding video wall requirements, with the range featuring both compact desktop, and high-density, rack-mounted chassis options.

VITEC's capture cards ingest content from a variety of sources including HDMI, SDI and IP. Using the powerful and intuitive WallControl 10 software, impressive large-scale video walls can be created and output using VITEC's graphics cards.



VSNMini 300

Compact Video Wall Controller

VSNMini 300 is small but powerful, the most space-conscious video wall controller in the VSN range. Engineered for maximum performance, reliability and efficiency, VSNMini 300 captures, processes and displays content no matter how small or large the demand. With three input or output card slots, VSNMini 300 provides reliability and dependability in today's mission critical control room environments.

VSNMicro 600

Desktop Video Wall Controller

Despite its small form-factor, VSN Micro600 boasts six slots for input or output cards. Designed to function quietly for deployment in environments where noise levels are a consideration, VSNMicro600 provides performance, reliability and efficiency when a quiet and compact video wall controller is required.

VSN V3

Rack-Mounted Video Wall Controller

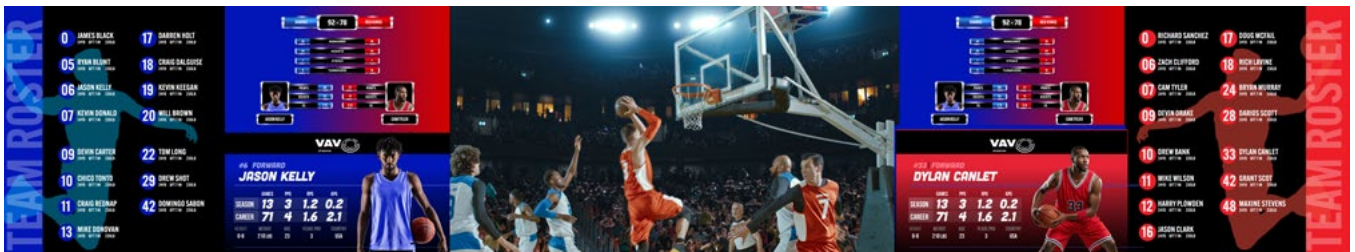
VSN V3 is the largest video wall controller in the VSN range, created with maximum performance and scalability in mind. Designed to optimize airflow and improve heat management, and with hot-swappable fans for uninterrupted use, VSN V3 is the ultimate solution for the most demanding video wall configurations, with options for five- and eleven-slot chassis providing incredible flexibility for input and output cards.

WallControl 10

Advanced video wall control technology



Video wall deployments requires multiple users to interact simultaneously with a large number of inputs across multiple screens to get the data where it is needed. WallControl 10 provides users with the interface required to quickly and effectively manage content by connecting to the video wall from any compatible browser. Using a simple drag and drop operation users can place any input source on any part of the video wall.



WallControl 10 allows any piece of content to be placed anywhere on a video wall, and enables administrators to deploy multiple unique videos walls from a single VITEC VSN system.

User Rights Management determines which users on a network can access each video wall, and also determines what level of permission each user has for fine-grained access control.

Support plans

VITEC Maintenance and Support Plans



VITEC Support Plans are comprehensive aftercare warranty programs which provide software and firmware updates and access to the Support Team via your VITEC channel partner. VITEC Support Plans also include bug fixes and additional interface options, all designed to maximize system performance and add enhanced functionality.



Technical Support



Software & Firmware Updates



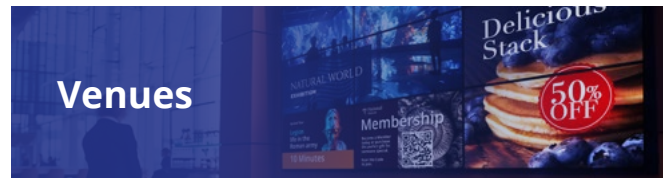
Advance Product Replacement



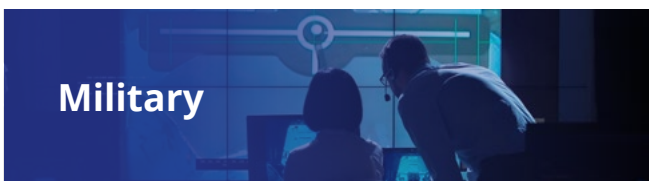
Access To Training Courses & Events



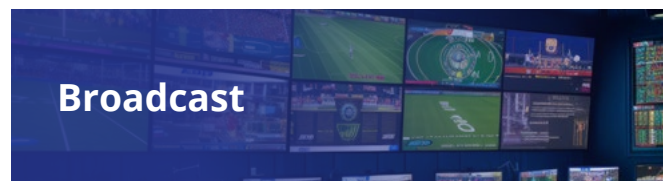
Corporate



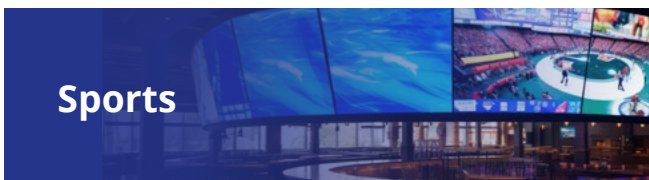
Venues



Military



Broadcast



Sports



Hospitality



Education



Healthcare