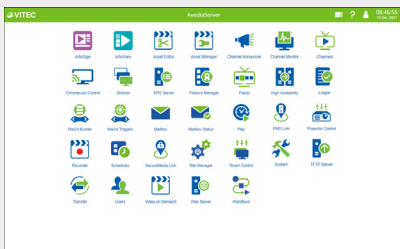


Chromecast Control

Stream content from a mobile device to a TV



The AvediaServer Chromecast Control application enables ArtioView users to stream content from their mobile device to the device in their room. It also allows central management of Chromecast usage and provides usage statistics and status.

Usage Options

- Sony BRAVIA® SmartTVs with built-in Chromecast
- Chromecast dongle attached to a SmartTV HDMI port

Features

- Enables users to easily share content from subscription services, such as Netflix or YouTube, from their mobile device directly to the screen
- Restricts users to accessing only the device in their room

Setup

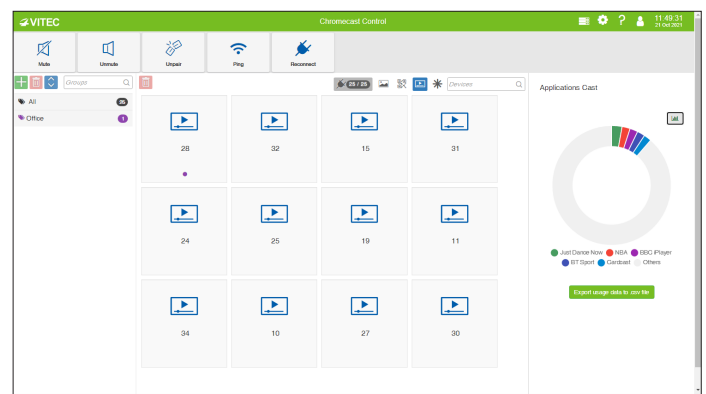
- Two logically separate networks are required, one for Chromecast and one for other user devices
- Both networks require access to the Internet and must be on different subnets

Chromecast Control Application

- Lists all discovered Chromecasts, their current status and other operational statistics
- Apply functions to one or more devices, or to all devices in a control group

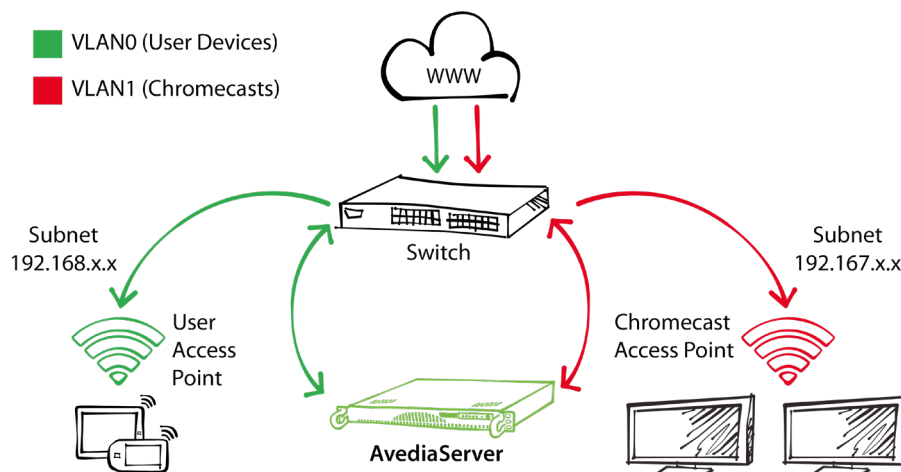
Chromecast Statistics

- Provides easy to read usage report with a choice of pie or bar charts
- Export usage report for all applications in .csv format



Ordering Information (P/N)

- 06047 (avsrv-a1008) - Avedia App option - Chromecast Control Software



Version 10.6