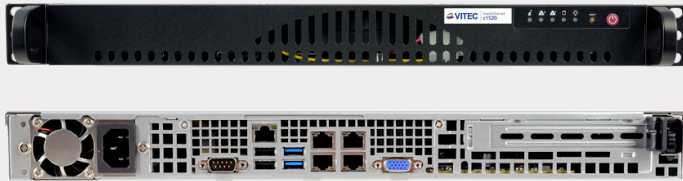


# Avedia Server c1520

Compact 1U hardware platform



The c1520 provides a flexible hardware platform for Avedia Server installations and is ideal for small to medium IPTV environments.

## Interfaces

- Four 802.3 100/1000 Ethernet (RJ-45) sockets plus IPMI
- Serial, VGA, 4 x USB

## Storage

- Fixed 1TB

## Physical Format

- Compact 1U rack-mounted standard 19" chassis
- Chassis dimensions: W: 426mm x D: 370mm x H: 43mm
- Weight: 5.65kg

## Environment

- Operating temperature range: 10° to 35°C (50° to 95°F)
- Non-operating temperature range: -40° to 70°C (-40° to 158°F)
- Operating humidity range: 8% to 90%
- Non-operating humidity range: 5% to 95%

## Power

- Internal power supply
- AC input: 100-240V, 60-50Hz, 3-1.5A Max
- Power consumption: Typical 70W, Max 120W

## Features & Benefits

- Single hard disk
- Four 1GB Ethernet ports
- Compact 1U rack mountable chassis

## Regulatory

- CE:
  - IEC 62368-1: 2014
  - EN 62368-1:2014+A11:2017
  - EN55032:2012 + corrigenda Aug 2012 & Dec 2012
  - EN55024:2010 + A1:2015
  - EN 61000-3-2:2014
  - EN 61000-3-3:2013
- UL/CSA:
  - UL62368-1:2014
  - CSA C22.2 No. 62368-1, Rev. February 17, 2012
- FCC:
  - 47CFR:2011 Part 15, Sub Part B
  - ANSI C63-4:2014
- Australia/New Zealand:
  - AS/NZS 62368.1:2018

## In the Box

- Avedia Server c1520 Hardware Platform (fixed 1TB content storage)
- Power cord & Product Safety Brochure (hard copy)

## Ordering Information (P/N)

- 18341-xx      Avedia Server - c1520 server
- xx denotes the power cord variant (uk, eu, us, au)

Chassis and Software Module Compatibility																
	Core Software Modules			Bandwidth Options							Hard Disk RAID Options					
	m8105	m8115	m8365	110 Mbs	220 Mbps	550 Mbps	1000 Mbps	2000 Mbps	3000 Mbps	6000 Mbps	RAID 10					
											4TB	8TB	16TB	24TB	32TB	48TB
c1520	✓	✓	✓	✓	✓											
c1565	✓	✓	✓	✓	✓	✓	✓	✓				✓	✓	✓	✓	
c1585	✓	✓	✓	✓	✓	✓	✓	✓	✓	✓		✓	✓		✓	✓
v1600	✓	✓	✓	✓	✓	✓	✓	✓	✓	✓						